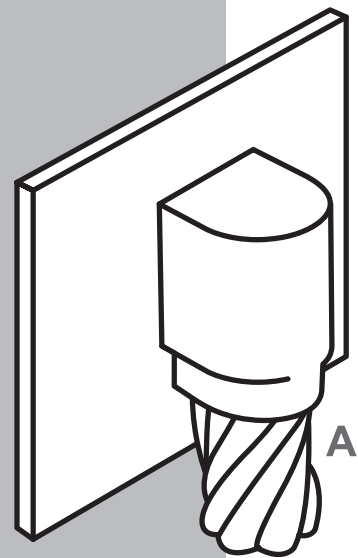


CS 25

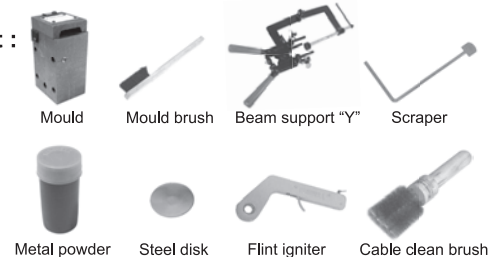
Cable to Steel
Vertical cable drop
to vertical steel surface
(on surface)



Conductor Size	Metal Powder	Graphite Mould	Handle Clamp
A_{mm^2}	(g)	Type	Type
10	45	CS25-C-10	HCC00-Y
16	45	CS25-C-16	HCC00-Y
25	45	CS25-C-25	HCC00-Y
35	45	CS25-C-35	HCC00-Y
50	65	CS25-C-50	HCC00-Y
70	90	CS25-C-70	HCC00-Y
95	115	CS25-C-95	HCC00-Y
120	115	CS25-C-120	HCC00-Y
150	150	CS25-C-150	HCC00-Y
185	200	CS25-CR-185	HCC00-Y
240	200	CS25-CR-240	HCC00-Y
300	250	CS25-CR-300	HCC00-Y

Special requirement can be requested

Tools Request :



Tools Advice :

- Tool box
- Butane torch
- Butane gas
- Gloves

- Note :**
- For perfect welding between conductor and flat steel, making connection need to remove moisture, oxide and galvanized metal
 - After welding process, coating steel's surface and connection by Rust-Oleum cold galvanizing is required
 - "On surface" means that the cable is closed to steel surface