

CAT6-POE Series

CAT6 Power-Over-Ethernet



	CAT6-POE	CAT6-POE-I
Operating Voltage	0-57 VDC	
Clamping Voltage	68 VDC	
Operating Current*	0.75 Amp Per Pin	
Peak Surge Current	10 kA (8 x 20 μ s) Per Pair	
Insertion Loss	< 0.1 dB	
Topology	Two Port Series	
Modes of Protection	All Lines (1-8) Protected (L-L) and (L-G) Signal High-Low; High-Ground; Low-Ground	
Transmission Speeds	10BaseT; 100BaseT; 1000BaseT	
SPD Technology	GDT, SAD, Series PTC	
Input/Output Connection	RJ-45Jacks (Shielded)	RJ-45Jacks(Isolated)
CAT 5 Output Cable	Shielded RJ-45, 7" (.18M) Unshielded RJ-45, 7" (.18M)	Shielded RJ-45, 7" (.18M) Unshielded RJ-45, 7" (.18M)
Ground Terminal	10-32 Stud	10-32 Stud (Isolated)
Operating Temperature	-40°C to +85°C	
Operating Humidity	0-95% Non-Condensing	
Dimensions (in / mm)	7.91"L x 3.48"W x 1.89"H [201 x 88.5 x 48 mm]	
Material	Aluminum	
Mounting	Flange	
Weight (oz / g)	5 oz [142 g]	
Certification	UL 497B Listed, Tested to IEC 802.11 (Complies to IEEE 802.3AT and 802.3AF)	
Warranty	5 Year	

Caution

Do not place this product in service on any signal line capable of supplying more than 0.75 Amps continuously.

The Edco CAT6-POE Series is designed to work on Category 6 Power-Over-Ethernet transmission line applications and is ideal for protecting expensive computer and video equipment from damaging surges and transients.

Transmission lines provide easy access for transients to enter a facility putting vital equipment at risk. The Edco CAT6-POE-I is available with an isolated ground to be used at the equipment end in order to prevent circulating ground currents.

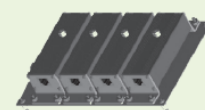
Up to four Edco CAT6-POEs can be installed using optional Edco C6-MP4 mounting bracket.

Features

- Exceeds Category 6 transmission values
- Three stage hybrid circuit
- DC over Ethernet all pins
- Optional mounting bracket
- Optional DIN mounting kit
- IEEE802.3af & IEEE802.3at compliant (POE & POE+)
- 5 year warranty

Optional Multi-Unit Mounting Bracket (Sold Separately)

Part Number: **C6-MP4**



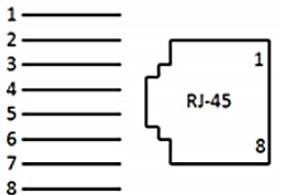
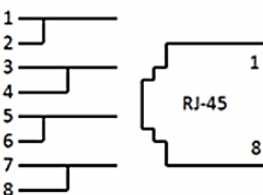
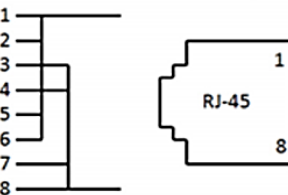
Bracket accommodates up to four CAT6-POE (-I) surge protectors. Bracket's ground lug allows all devices to share one single ground connection.

Installation Instructions

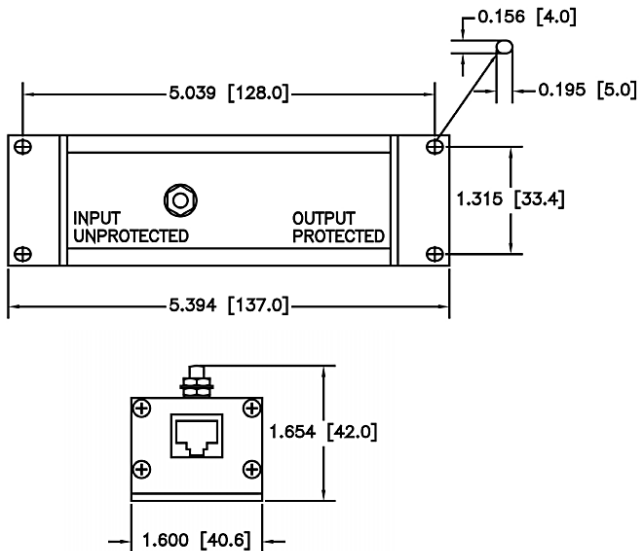
DANGER!

Only qualified personnel should install or service this system. Electrical safety pre-cautions must be followed when installing or servicing this equipment. To prevent risk of electrical shock, turn off and lock out all power sources to the unit before making electrical connections or servicing.

1. Mount the SPD as close as possible to the protected equipment and secure. #6 hardware is recommended.
2. Connect a #10 ground wire using a 10-32 ring terminal (not provided) to the SPD ground stud. Connect the opposite end of the wire to a "building approved ground". Wire should be short and straight as possible.
3. Connect the POE supply cable (with RJ-45 connector) to the INPUT side of the SPD.
4. Complete the circuit by connecting the CAT5 cable (provided) from the output of the SPD to the protected equipment.

<p>Higher Operating Currents * For applications requiring higher Operating Currents, input connections can be paralleled to meet the desired rating.</p>	<p>4 Pair – 0.75 A/36W per pin</p> 	<p>2 Pair – 1.5 A/72W per pin</p> 	<p>1 Pair – 3.0 A/144W per pin</p> 
---	--	--	--

Dimensional Information



Ordering Information

MODEL	APPLICATION
CAT6-POE	CAT6 Protection
CAT6-POE-I	CAT6 Protection with Isolated Ground
ACCESSORIES	
C6-MP4	Multi-Unit Mounting Bracket
11604KIT-C6	Single unit DIN Mounting Kit * (Sold Separately)

*Includes DIN clips and hardware to mount a single unit.