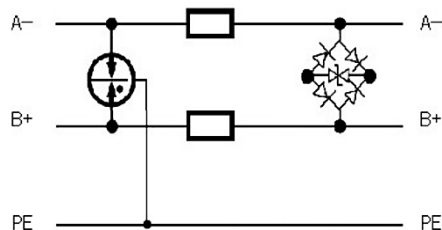
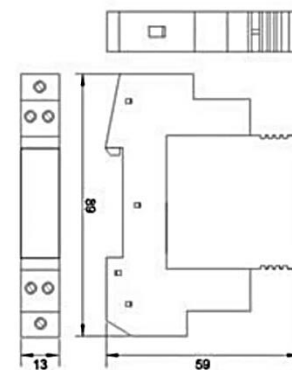


## Data network surge arrester

S-DM-24/B0



Basic circuit diagram



Dimension drawing

Data network surge arrester for double-wire systems/RS485 against surges at the boundaries from lightning protection zone from 0B-2 and higher.

- Data network SPD in according with IEC61643-21;
- Can be used for tracker, controller etc. signal and data transmission surge protection.
- Pluggable surge protection for DIN mounting.
- Signal transmission is not interrupted when exchanging module.
- Two-stage protection circuit
- Suitable to use for RS232 or RS485 surge protection.

Type		S-DM-24/B0
In accordance with		IEC 61643-21: 2005
Nominal Voltage (Vdc) $U_n$		24
Max. continuous operating voltage (Vac/dc) $U_c$		28/24
C2 Nominal discharge current (8/20) $I_n$		5 kA
C2 Total Nominal discharge current (8/20μs) $I_n$		10 kA
Voltage protection level	L-L@C2 (8/20μs) $U_p$	< 55
	PG-SG@C2 (8/20μs) $U_p$	< 500
	L-L/L-PG@C3 (8/20μs) $U_p$	< 48
	PG-SG@C3 (8/20μs) $U_p$	< 600
Nominal Current (A)		0.5 A
Transmission Speed (bps)		2Mbps
Insertion loss (dB)		≤0.5
Series impedance per line (Ohm)		2.2
Protection line		One pair
Mounting		35mm DIN-rail in accordance with EN 50022/DIN46277-3
Type of Connection IN/OUT		screw/screw
Dimensions (mm)		89 X 13 X 59
Operating temperature range		- 40°C ~ + 80°C □