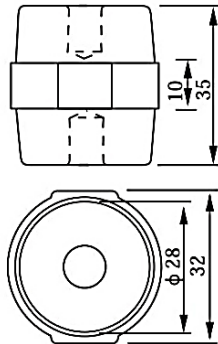
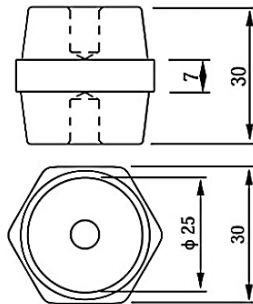


**BUS BAR INSULATOR**



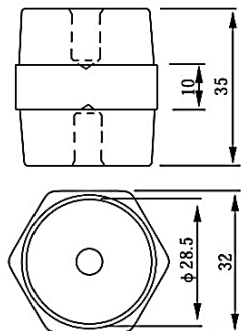
S-SM - 35	
Tensile Strength (LBS)	600
Voltage withstand (KV)	10
Torque Strength (FTLBS)	10
Screw (mm)	8
Screw depth (mm)	11

\*Indoor



S-SEP 3030	
Tensile Strength (LBS)	600
Voltage withstand (KV)	11
Torque Strength (FTLBS)	10
Screw (mm)	6
Screw depth (mm)	9

\*Indoor / Outdoor



S-SEP 3532	
Tensile Strength (LBS)	650
Voltage withstand (KV)	12.5
Torque Strength (FTLBS)	25
Screw (mm)	8
Screw depth (mm)	10

\*Indoor / Outdoor